

Domestic Terminal Upgrade Project

Brisbane Airport Corporation (BAC) is committed to providing infrastructure to ensure the Domestic Terminal has the capacity to cope with future demand. Some parts of the Domestic Terminal Upgrade Project have been completed, and over the next six months other changes will occur in the precinct as part of the multi-level car park project (MLCP) and the Domestic Terminal access project (DTAP). Further information about the staged opening of the MLCP and DTAP will be included in coming updates.

New public drop-off road

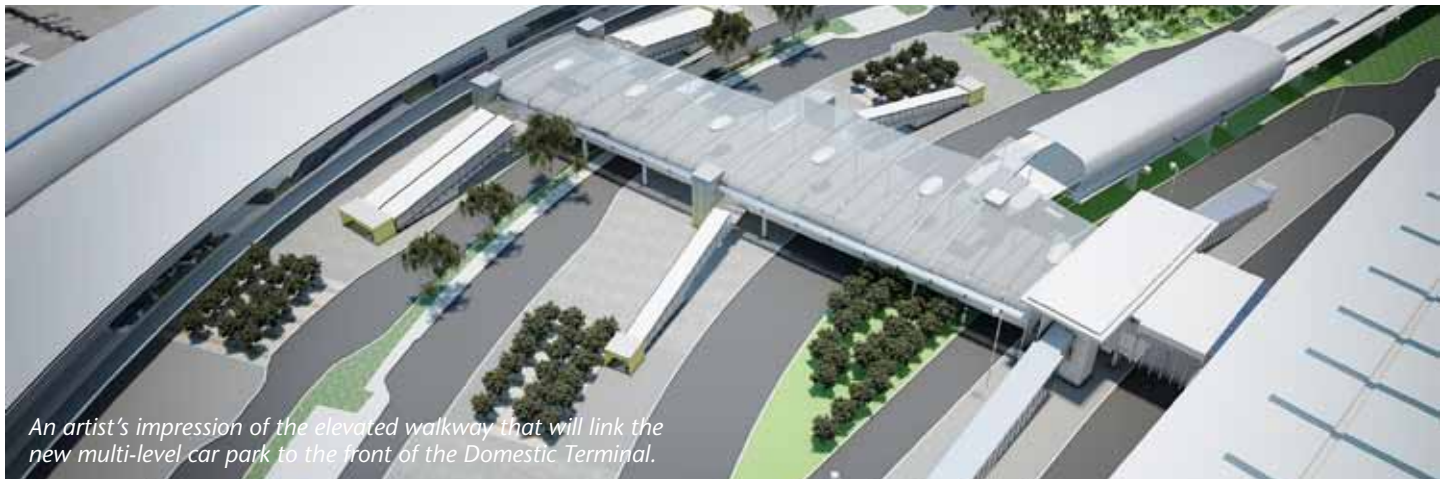
Constructed as part of the DTAP, the new public drop-off road is expected to open in late October, weather permitting. Public pick-up will be permitted on this road until the new public pick-up facility is opened in February 2012. This is the start of a number of changes that will occur on the roads in front of the terminal.

The key features of this new public pick-up and drop-off road include:

- Left hand drop-off and pick-up bays
- Six 30-minute centrally located bays for passengers with a disability
- Taxis and buses will be allocated their own roads, providing greater capacity for public drop-off on the new road.

Road closures during September

In mid September there will be temporary road closures and diversions on the taxi, ground transport operators and public roads. The road closures will occur over a five day period between 11.00pm to 5.00am to allow for the dismantling of the temporary scaffolding. The roads will be reopened to traffic by 5.00am each morning. Traffic controllers and signage will be in place to direct all road users and pedestrians. A traffic alert advising of the dates will be sent out prior to the road closures.



An artist's impression of the elevated walkway that will link the new multi-level car park to the front of the Domestic Terminal.

New multi-level car park (MLCP) at the Domestic Terminal

Work on the new multi-level car park for short term parking is progressing well. Car rental pick-up and drop-off has now moved to a permanent location on Level 1 of the new MLCP.

On completion this car park will add a further 5,000 parking bays, bringing the total number of parking bays in the Domestic Terminal precinct to around 9,000 by the end of this year.

A number of new facilities have been introduced into the existing long term multi-level car park, including:

- Convenient access to pay machines in the lift lobbies on every level of the car park, including ground level
- Easy access to face-to-face customer service on the ground floor
- Automatic payment options
- Guaranteed undercover parking when pre-booking (this parking is limited so book early to secure a park).

The first of the three tower cranes is scheduled to be removed commencing Monday, 5 September 2011 and will take approximately three days to complete. Whilst all works will be confined to the construction site a large mobile crane will be required on site and up to 15 semi-trailers will be used to remove the components off airport.

Traffic congestion is not anticipated, but please be aware of the unusual level of traffic on Airport Drive during this period.

New Bus route 590 welcomed to Airport

As a result of the collaborative planning between Translink and BAC, the launch of a new route 590 bus service to Airport commenced Monday the 29th August. Buses will run every 15 minutes during peak periods and half hourly off peak connecting Airport Village DFO to Cannon Hill, Westfield Carindale and Westfield Garden City shopping centres. The route services the Da Vinci, Export Park and Airport Village precincts. For further details of the service visit www.translink.com.au

2011 Bridge to Brisbane

The 2011 Bridge To Brisbane Fun Run will be on Sunday 11 September 2011 starting from the new Sir Leo Hielscher Bridge (formerly the Gateway Bridge) to the RNA Showgrounds. This will cause some traffic delays and closures.

The southbound lanes of the new Sir Leo Hielscher Bridge will be restricted to two lanes for normal traffic, and the northbound lanes will be unaffected. There will be minor traffic delays southbound between 2.30am – 9.30am.

Kingsford Smith Drive will also be closed from 2.30am – 11.30am. Traffic heading northbound along the Inner City Bypass will be diverted off the Abbotsford Rd off ramp and directed along Sandgate Road.

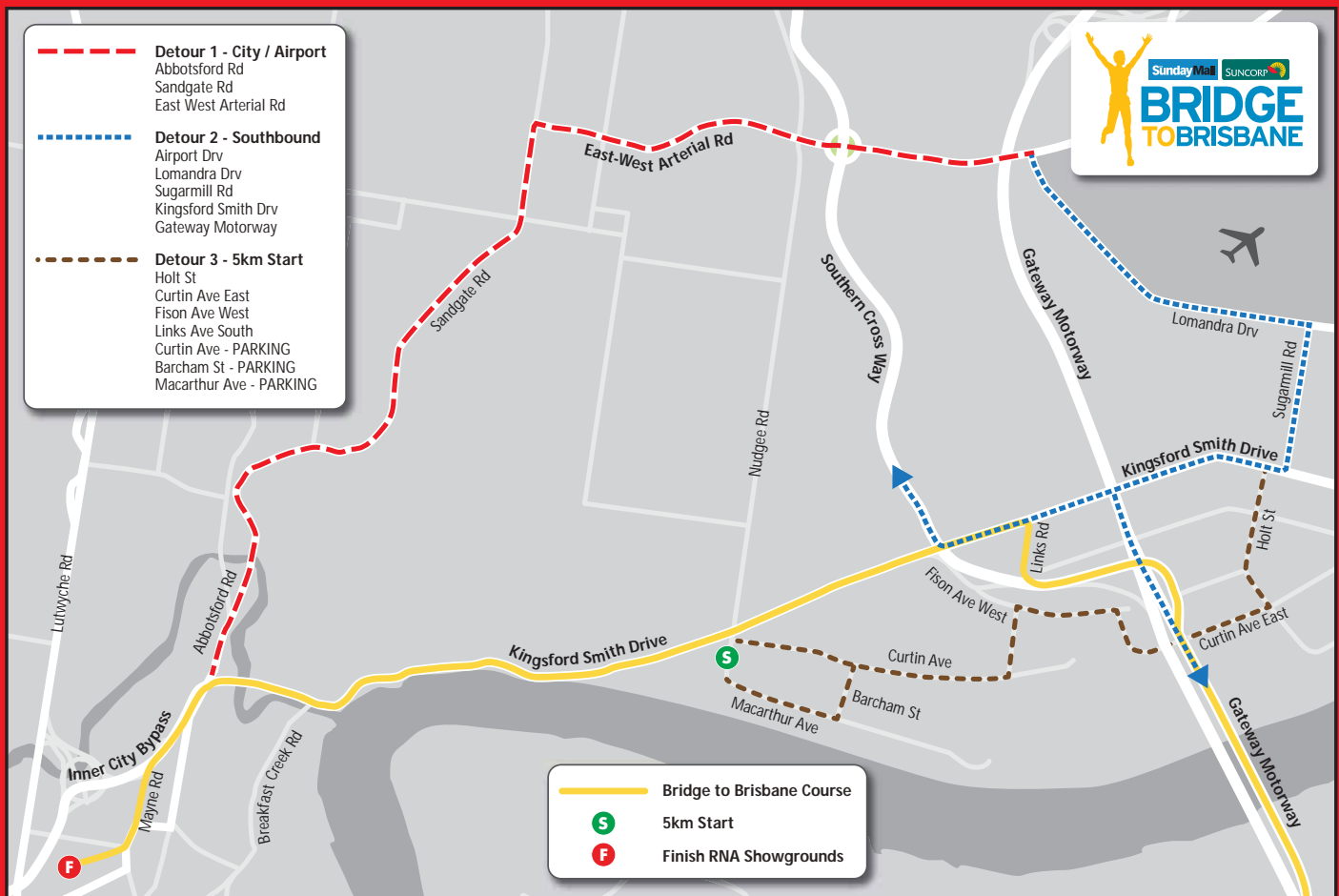
Traffic heading northbound along Breakfast Creek Road will follow the detour along Edmonstone Road and proceed along Abbotsford Road into Sandgate Road.

Cars travelling westbound along Airport Drive wanting to drive towards the City / western suburbs will need to proceed along the East West Arterial Road, then southbound along Sandgate Road.

The full list of the road closure times will be advertised in The Sunday Mail and on the official Bridge To Brisbane website: www.bridgetobrisbane.com.au

Please allow sufficient amount of time to arrive at the airport to accommodate the expected traffic delays during this event.

Bridge to Brisbane Detour Map 2011



PARK GLOBAL FLY LOCAL

Avoid delays in the Domestic Terminal precinct – park at the International Terminal and with your valid parking ticket travel free on the orange T-bus to the front door of the Domestic Terminal.

No queues, no diversions and a transfer to the doorstep of either Qantas or Virgin Australia. Choose one of the 1,700 undercover bays and go to the bus stop on Level 2 of the terminal. T-bus runs from 5.10 am to 10.35 pm daily, leaving every 20 minutes and every 10 minutes during peak times. Parking for seven days is just \$99.

Vehicle height restrictions at Domestic Terminal

A 3.8 metre height restriction is in place for all vehicles using the roads in front of the Domestic Terminal at Brisbane Airport and will be enforced until late September 2011.

This height restriction is in place to allow construction of the new pedestrian overpass across the Domestic Terminal face roads.

When the overpass is completed, height clearances will be limited to 4.3m.

Public trucks, buses and coaches

- There will be no access to the roads in front of the Domestic Terminal for any vehicle higher than 3.8 metres.
- Bus operators not registered with Brisbane Airport Corporation, but wishing to set down or pick up passengers, must contact 1300 732 240 to make alternative arrangements.

Information for licensed ground transport operators (GTOs) at Brisbane Airport

- A new location within the Domestic Terminal precinct has been provided for GTO vehicles higher than 3.8 metres for passenger pickup and drop-off. A separate flyer has been provided showing the new location.
- For enquiries, GTOs should contact 1300 732 240.

General airport advice

If you are an on-airport business and expecting truck deliveries, please advise your suppliers about the vehicle height restrictions at the Domestic Terminal.

Construction activity on Airport Drive

Construction work will be undertaken at a site adjacent to the Shell Service Station on Airport Drive during September. This construction work will be ongoing for around one year and will result in additional trucks using Airport Drive and entering and exiting the work site. Traffic management and signage will be in place to assist motorists. Road users are advised to drive with care during the construction activity.

During September / October, approximately 15,000 m³ of fill will be relocated over a three week period as part of construction on the Australian Federal Police Office Building. This means around 940 truck movements or 60 trucks twice a day will be doing a circuit on Airport Drive from and including the International Terminal roundabout and the Domestic Terminal roundabout. Traffic control and signage will be in place during this time. Traffic congestion is not anticipated but please be aware of the unusual amount of traffic on Airport Drive during this period.

CONVENIENT MULTI-LEVEL CAR PARK PAYMENT OPTIONS

Parking at Brisbane's Domestic Terminal has never been easier.

Option 1: Insert your credit card at the entry gate: no ticket is issued. Then simply put the same credit card in when you exit and press the button for a receipt. You're out with no paper tickets and queues at pay machines.

Option 2: Collect a paper ticket on entry, pay by cash or credit card at the automatic pay machines on any level of the car park or pay at the exit boom gate pay machine by first entering your ticket, then your credit card.

Domestic Terminal Motorcyclists only: on entry collect a paper ticket and present it to the new customer service window.

GUARANTEED UNDERCOVER SPACE NOW AVAILABLE AT THE DOMESTIC TERMINAL MULTI-LEVEL CAR PARK

Book online to secure a guaranteed undercover space in the Domestic Terminal multi-level car park. Visit www.bne.com.au, book one of the limited spaces and print your booking receipt for display.

The Guaranteed Space area is located next to Valet parking on level three – simply follow the signs to ParkValet and use the speed entry ramp to avoid any car park queues.

Cost: normal parking rates plus \$10 booking fee

Features:

- Guaranteed undercover space
- If space is unavailable BAC will valet park your car and waive valet charges
- Option to use your credit card as your ticket to enter and exit the car park via the express ramps
- Open 24 hours a day, 365 days a year
- All major credit cards accepted

