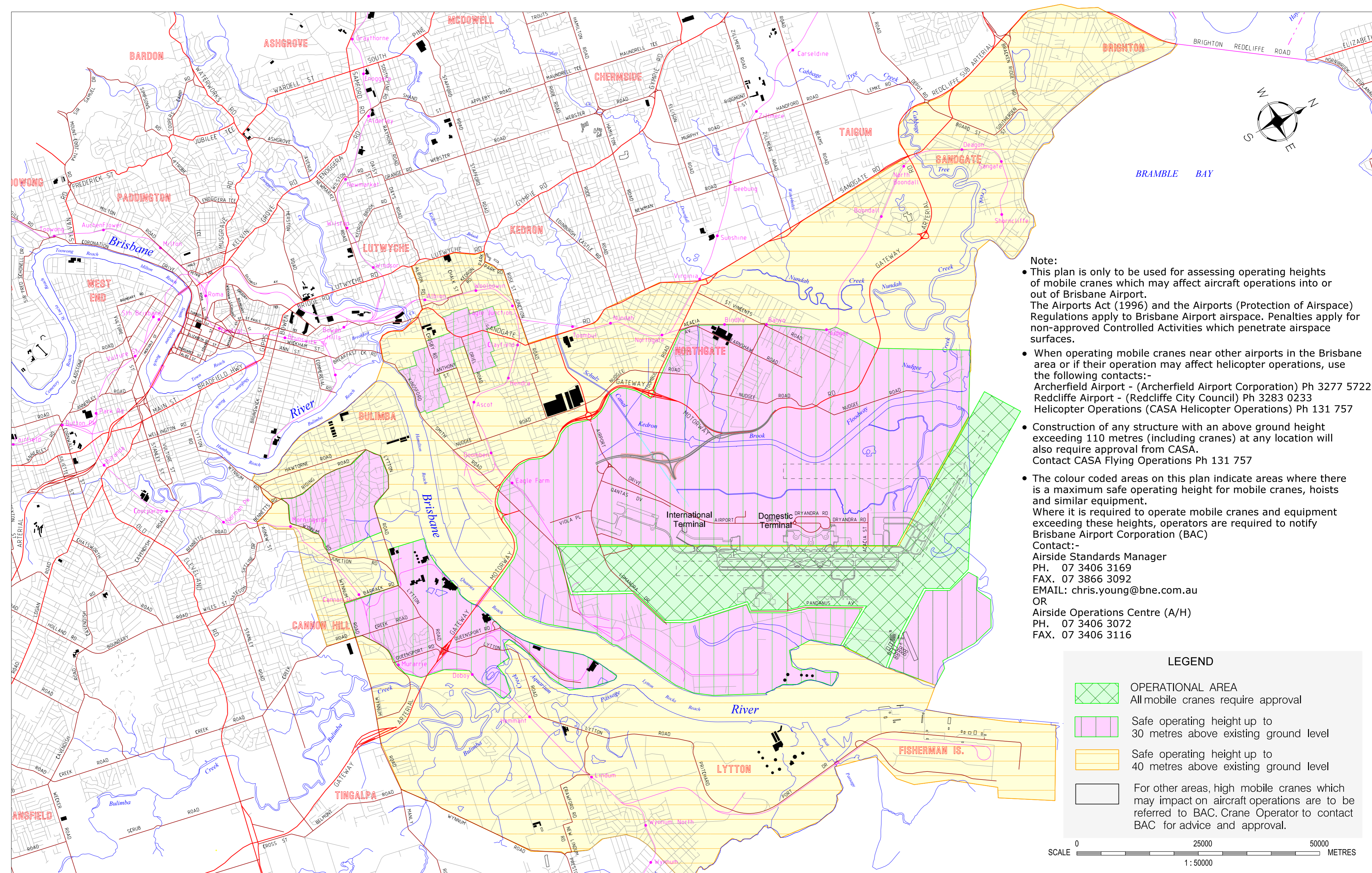


BAC HAS ENTERED INTO A LICENSE AGREEMENT WITH NEARMAP PTY LTD TO USE CERTAIN MAPS OF THE AIRPORT (PRODUCT). YOU ARE PERMITTED TO USE THE PRODUCT UNDER THE FOLLOWING CONDITIONS:
 1. BUSINESS PURPOSES: YOU MAY COPY OR DISTRIBUTE THE PRODUCT FOR BUSINESS PURPOSES.
 2. YOU UNDERTAKE TO DESTROY OR RETURN TO BAC ANY AND ALL COPIES OF THE PRODUCT WHICH ARE WITHIN YOUR POSSESSION, CUSTODY OR CONTROL, WHEN YOU NO LONGER REQUIRE THE PRODUCT FOR BUSINESS PURPOSES.
 PRODUCT FOR BAC INTERNAL BUSINESS PURPOSES.

ALL DRAWINGS PRODUCED BY BAC ARE IN MICROSTATION DGN FORMAT. THEREFORE NO WARRANTIES ARE MADE FOR THE PRODUCT TO BE USED IN ANY OTHER CAD SYSTEM OR WITHOUT THE NECESSARY MICROSTATION RESOURCE FILES.

THIS PLAN REMAINS PRELIMINARY IN STATUS UNLESS ALL SIGNATURES HAVE BEEN APPENDED. FOR THE SAKE OF CLARITY, SOME UNDERGROUND SERVICES MAY BE SHOWN ON THIS PLAN. THESE SERVICES ARE BASED ON THE DATA PROVIDED TO BAC. THE VALUES OF PSM 31 LOCATED NEAR THE INTERSECTION OF THE RUNWAYS AT THE OLD BRISBANE AIRPORT, DATUM FOR LEVELS - AERODROME DATUM (B.C.C.), FOR A.H.D. LEVELS SUBTRACT 1.134 FROM AERODROME.

THIS PLAN CARRIES BRISBANE AIRPORT CORPORATION PTY. LTD. (BAC) COPYRIGHT AND IS SUPPLIED FOR INFORMATION ONLY AND MUST NOT BE TRANSFERRED TO ANY THIRD PARTY. THE INFORMATION IS PROVIDED AS IS AND WITHOUT WARRANTY OF ACCURACY AND COMPLETENESS. NECESSARY INVESTIGATION, SITE INSPECTION AND MEASUREMENT. ALL DIMENSIONS ARE IN METRIC SYSTEM. DO NOT SCALE DRAWING. USE FIGURED DIMENSIONS ONLY. USERS OF THIS INFORMATION MUST INDEMNIFY BAC AGAINST ANY AND ALL CLAIMS, DAMAGES, LOSSES AND EXPENSES, INCLUDING REASONABLE AND ASSOCIATED DISSENTS.



Note:

- This plan is only to be used for assessing operating heights of mobile cranes which may affect aircraft operations into or out of Brisbane Airport. The Airports Act (1996) and the Airports (Protection of Airspace) Regulations apply to Brisbane Airport airspace. Penalties apply for non-approved Controlled Activities which penetrate airspace surfaces.
- When operating mobile cranes near other airports in the Brisbane area or if their operation may affect helicopter operations, use the following contacts:-
 Archerfield Airport - (Archerfield Airport Corporation) Ph 3277 5722
 Redcliffe Airport - (Redcliffe City Council) Ph 3283 0233
 Helicopter Operations (CASA Helicopter Operations) Ph 131 757
- Construction of any structure with an above ground height exceeding 110 metres (including cranes) at any location will also require approval from CASA. Contact CASA Flying Operations Ph 131 757
- The colour coded areas on this plan indicate areas where there is a maximum safe operating height for mobile cranes, hoists and similar equipment. Where it is required to operate mobile cranes and equipment exceeding these heights, operators are required to notify Brisbane Airport Corporation (BAC)
 Contact:-
 Airside Standards Manager
 PH. 07 3406 3169
 FAX. 07 3866 3092
 EMAIL: chris.young@bne.com.au
 OR
 Airside Operations Centre (A/H)
 PH. 07 3406 3072
 FAX. 07 3406 3116

LEGEND

- OPERATIONAL AREA
All mobile cranes require approval
- Safe operating height up to 30 metres above existing ground level
- Safe operating height up to 40 metres above existing ground level
- For other areas, high mobile cranes which may impact on aircraft operations are to be referred to BAC. Crane Operator to contact BAC for advice and approval.

SCALE 0 25000 50000 METRES
1 : 50000

Req. No.	Drawn	Amendment	Date	Rev. No.
111411	YB	AIRSIDE STANDARDS MANAGER CONTACT DETAILS	05/11/13	4
111411	YB	14/32 RWY STRIP WIDTH 150M	03/10/13	3
111411	YB	RE-ISSUE	23/08/13	2
111411	DB	ORIGINAL ISSUE.	26/07/11	1

Authorised Rep. & Signature	Date

OPERATIONAL PLAN
OPERATING HEIGHTS
FOR MOBILE CRANE, HOISTS
AND SIMILAR EQUIPMENT

	Brisbane Airport Corporation Pty Ltd 11 The Circuit Brisbane Airport QLD 4008 PO Box 61 Hamilton QLD 4007 Australia Telephone : 61 7 3406 3000 Facsimile : 61 7 3406 3111 Email : info@bne.com.au www.brisbaneairport.com.au ABN 54 076 870 650		Scale 1 : 50 000
	Design Ref. / Project Ref. / Discipline / Airport Precinct / Sub-Number Drg. No. BAC / 111411 / O / 00 / 001	Size A2	Revision 4
Plot Date & Time: 6/05/2015 11:31:06 AM		User: BACVSPWPDF01\$ Pldrv: ipldtrvm.plt	